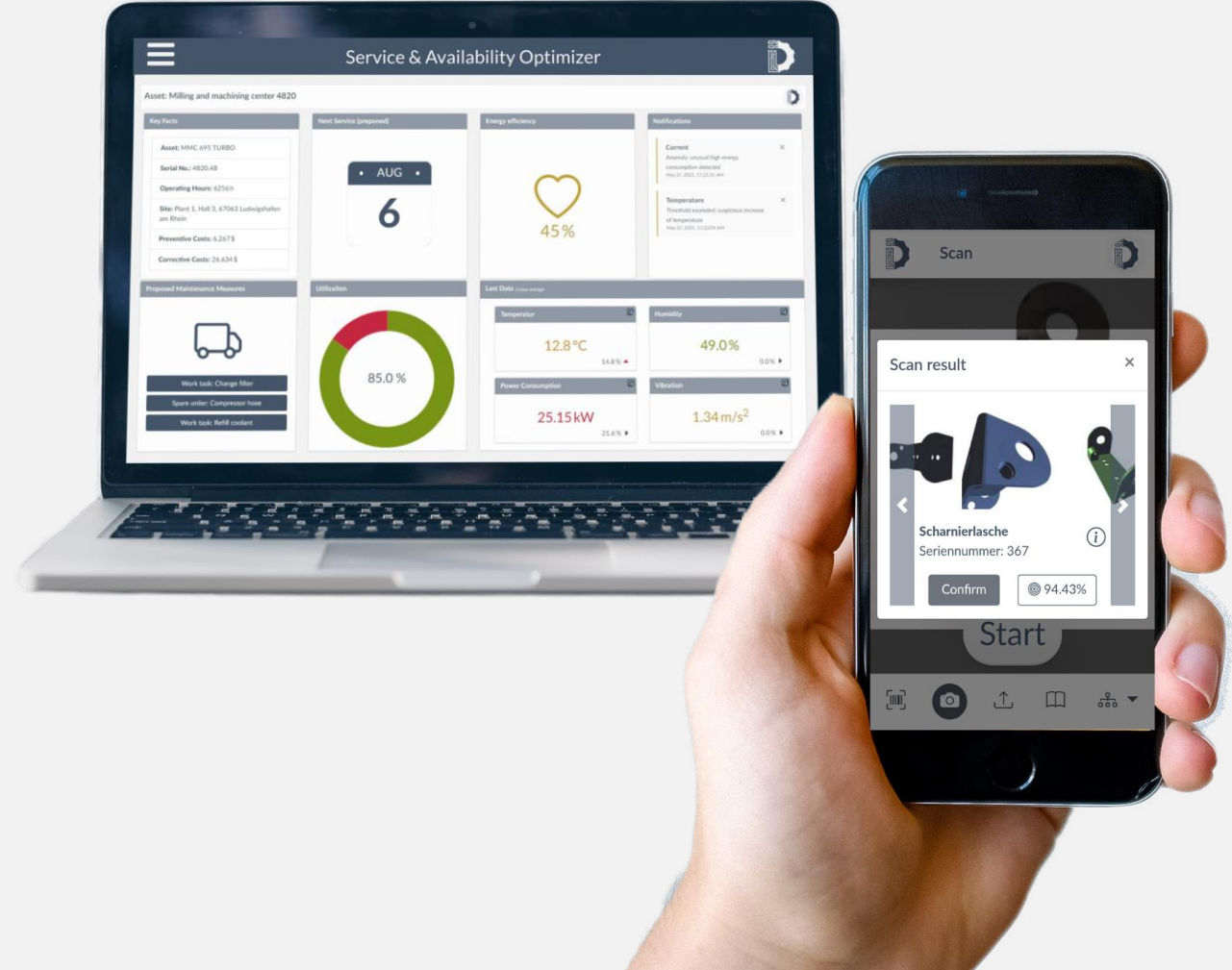


DATAbility.ai

Engineering know-how meets artificial intelligence.



Solutions for predictive operation and service automation



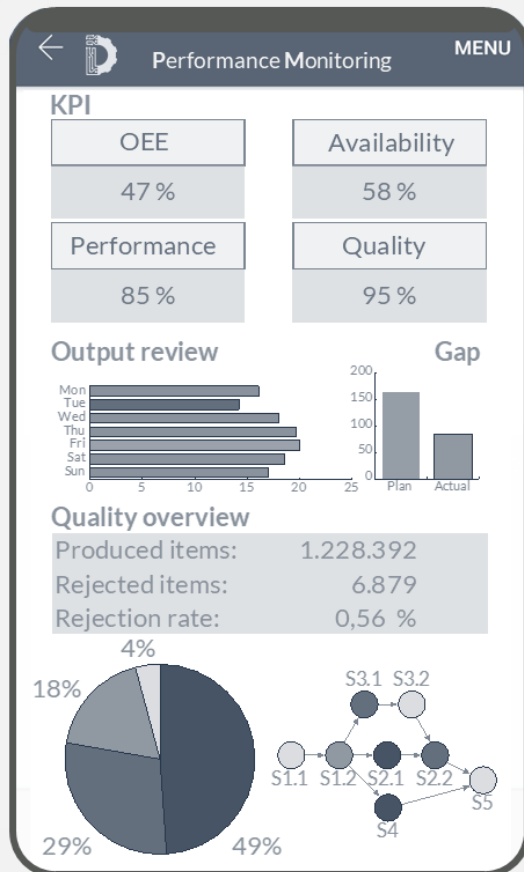
DATAbility's vision: Enabling a seamless human-machine collaboration!





We support your team-up: Get clear insights and recommendations.

System analytics



Condition monitoring and maintenance planning

Service & Availability Optimizer

Filter

Customers * Time Period * Asset * Component *

Time Period: 2021

Update Remove filters

Asset Overview

Active	Good	Alarming	Unacceptable
58	95%	4%	1%
2.0%	-1.4%	3.2%	-0.8%

Asset List

Status	Vehicle	Component	Condition	Maintenance	Last Update	Actions
□□	Bus 6844	AC	no failure	Scheduled: 2021-06-02	2021-03-31	🔍
□□	Bus 6844	Door System 1	no failure	Scheduled: 2021-06-02	2021-03-31	🔍
□□	Bus 6844	Door System 2	no failure	Scheduled: 2021-06-02	2021-03-31	🔍
□□	Bus 6844	Bearing #1	loose fit	Immediate	2021-03-31	🔍 📄 🗑️
□□	Bus 6844	Bearing #2	vibration limit exceeded	Preferred: 2021-04-15	2021-03-31	🔍 📄
□□	Tram 5820	AC #1	no failure	Scheduled: 2021-08-17	2021-03-29	🔍
□□	Tram 5820	AC #2	high energy consumption	Preferred: 2021-04-07	2021-03-29	🔍 📄
□□	Tram 5820	Door System 1	lock fault	Preferred: 2021-03-02	2021-03-29	🔍 📄
□□	Tram 5820	Door System 2	no failure	Scheduled: 2021-08-17	2021-03-29	🔍
□□	Tram 5820	Door System 3	no failure	Scheduled: 2021-08-17	2021-03-29	🔍

10 * Zeilen pro Seite 1 2 3 4 5 6

Spare & troubleshoot support

Spare Part Identifier

Photo of a spare part (Magnetkartenlesegerät).

Magnetkartenlesegerät

Probability: 90%

Lieferumfang:
Magnetkartenleser FSH-499(DW5)G-2ZM-IS

Artikelnummern:
PU.3216-54

Support Notifications Settings



Meet our core: (PhD) engineers approaching downtime with strategy & AI!



Sebastian Baumann

MD & Founder



Simon Mehringskötter



Uwe Klingauf

Advisor & Founder
Prof. Dr.-Ing.



Anett Horváth



Christian Preusche

TD & Founder



DB Cargo



EWIKON



DUNLOP TECH GmbH



PFALZWERKE
Pfalzwerke Gruppe

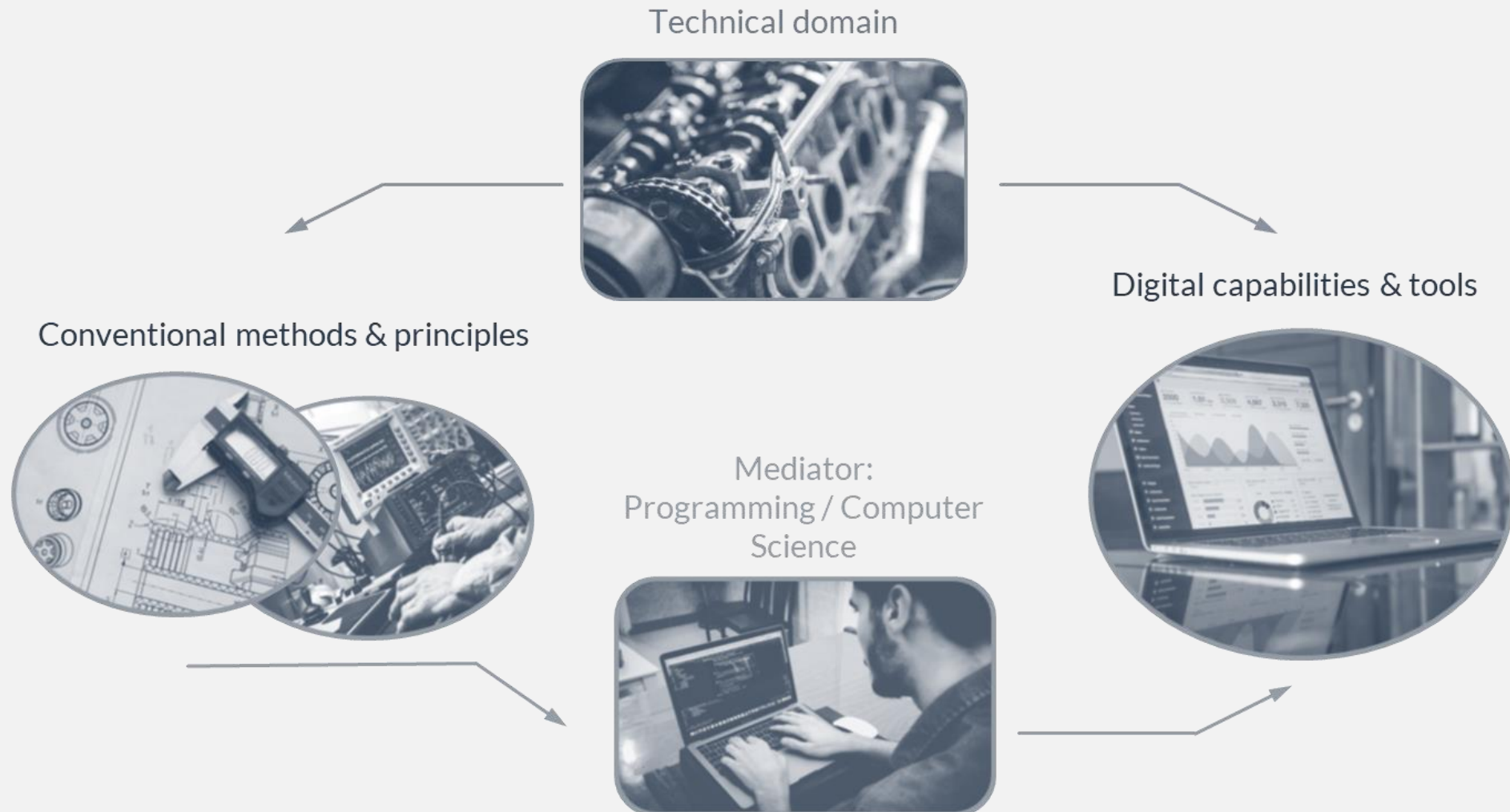


vodafone

SCHEIDT & BACHMANN



Evolution: The job profile of an engineer is changing!

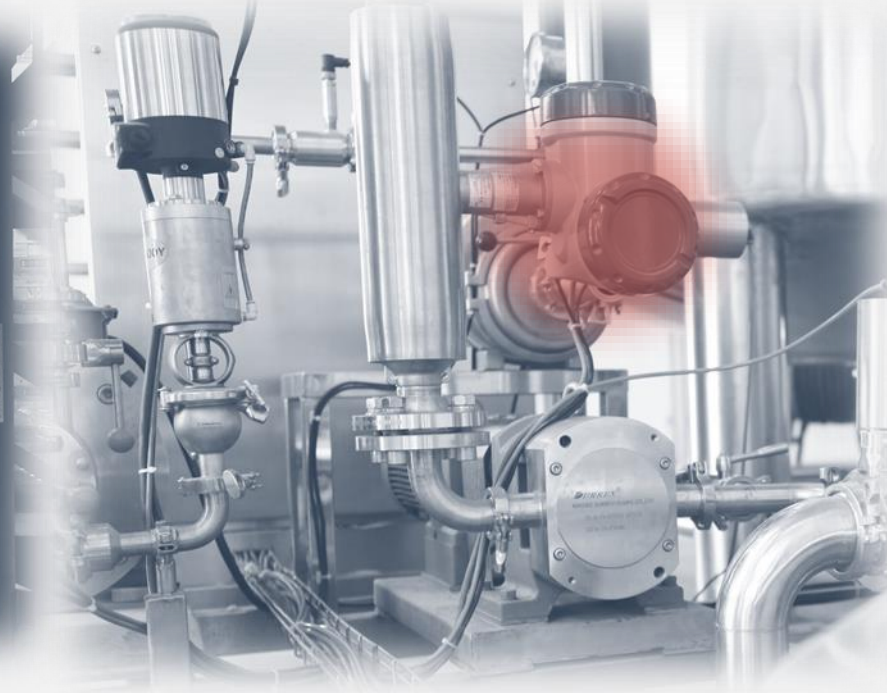




Challenge: Downtimes are cost-intensive and workflows are laborious!



Logistics



Production



Mobility

Reactivity on site
causes...

...manual efforts and
unavailability...

... which leads to an
efficiency gap of 20%!

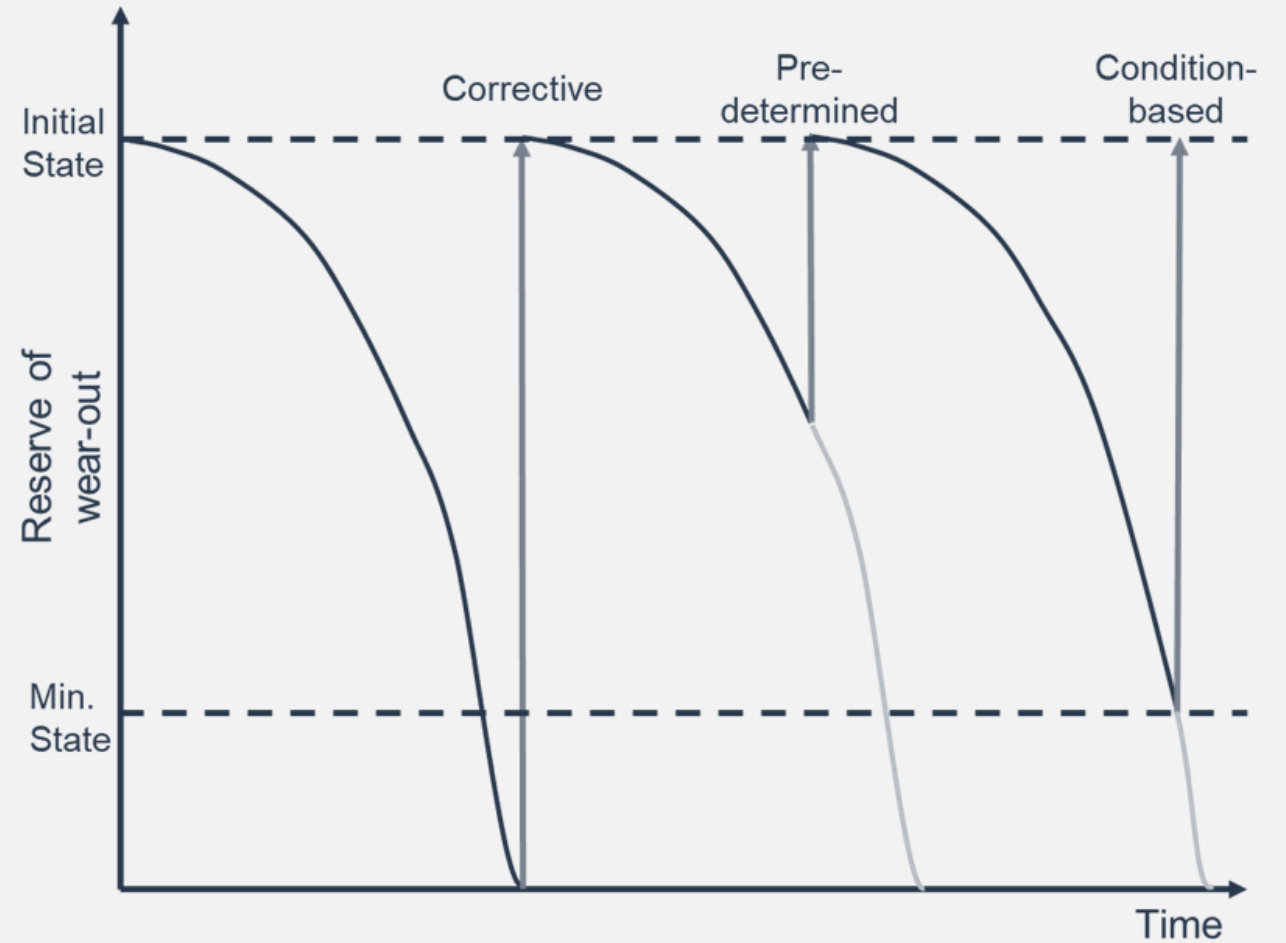
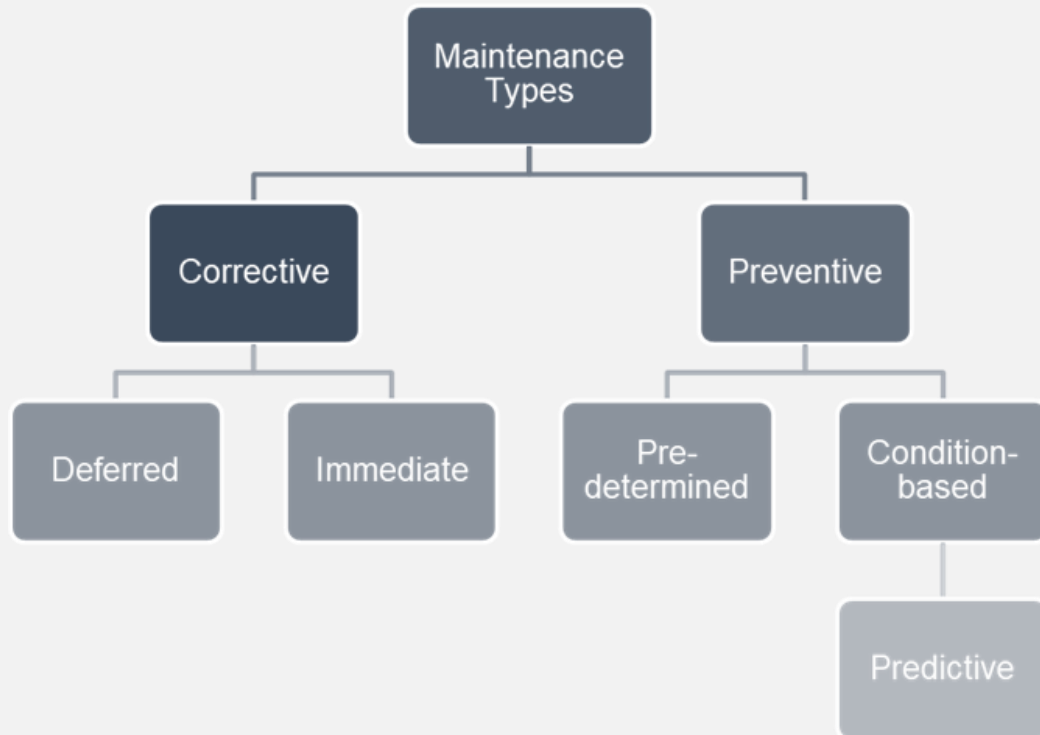


Cross-industry affects? Yes, it is omnipresent!



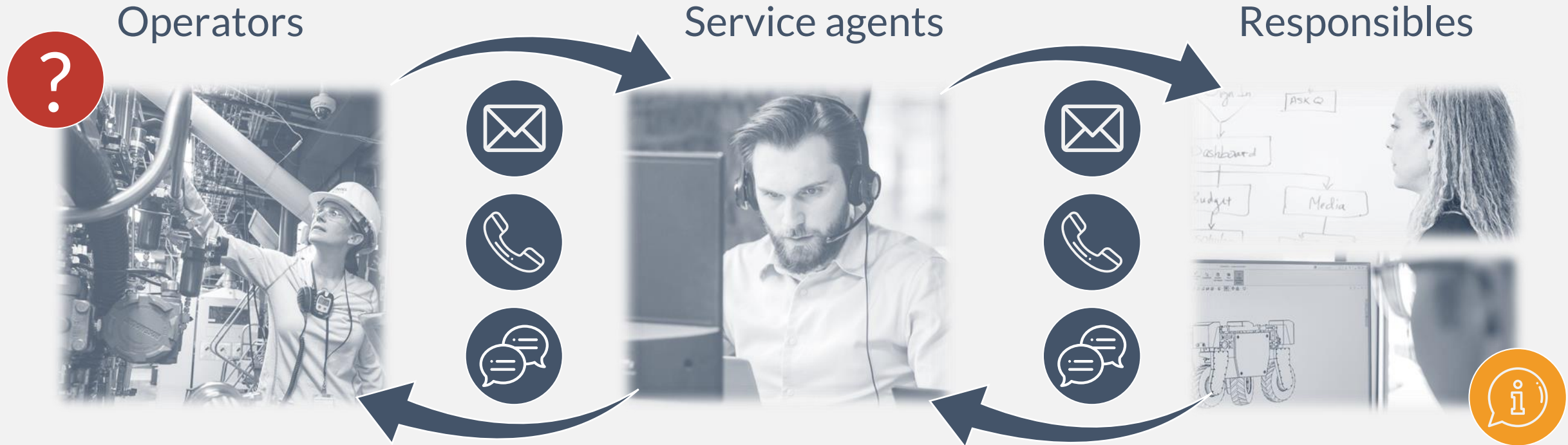


Predictive maintenance: It's all about interpretation & prevention!

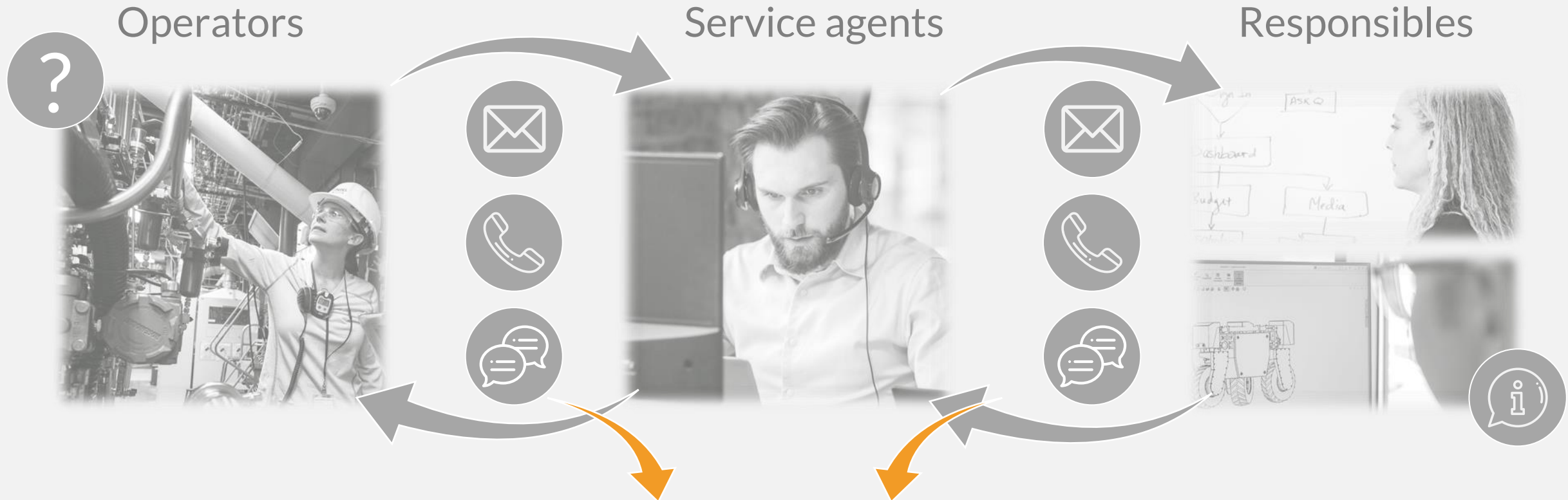




Current gaps: Workflows are manual, laborious and inefficient!



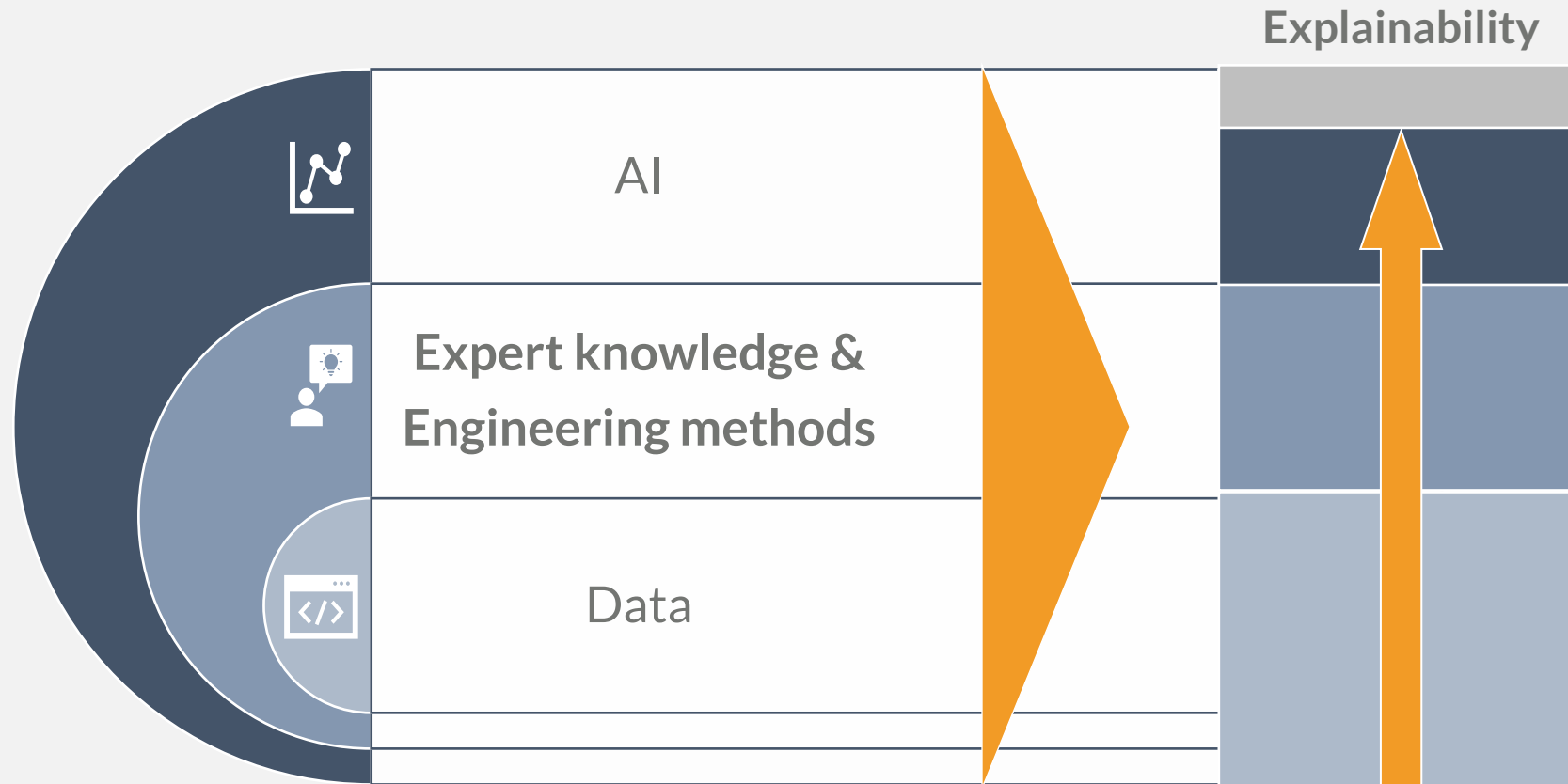
ML & AI capability: Taking manual efforts to automation!



- ✓ Shorten process times by more than 95 %.
- ✓ Increase availability & cut SLA penalties by more than half.
- ✓ Reduce workload and scale service quality.



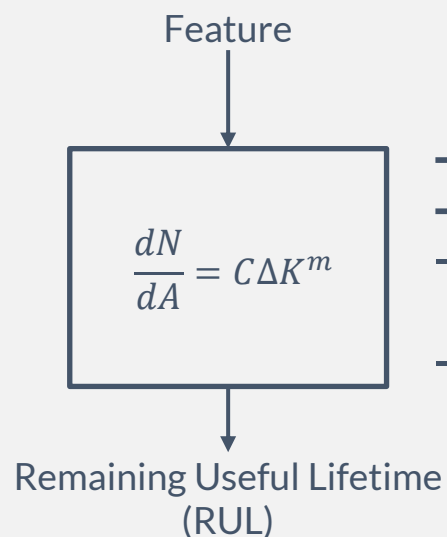
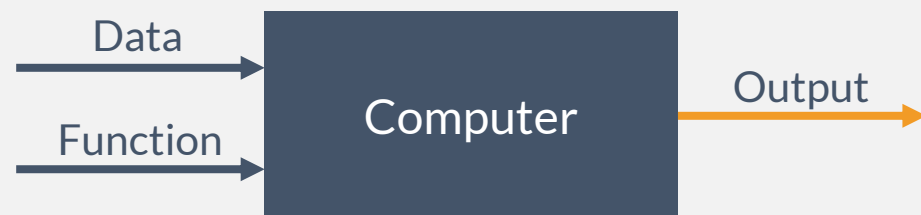
Our strategy: We merge data, engineering methods & AI algorithms!





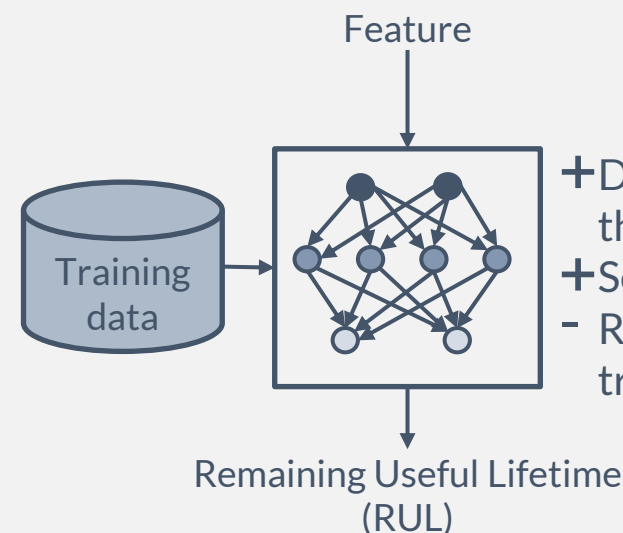
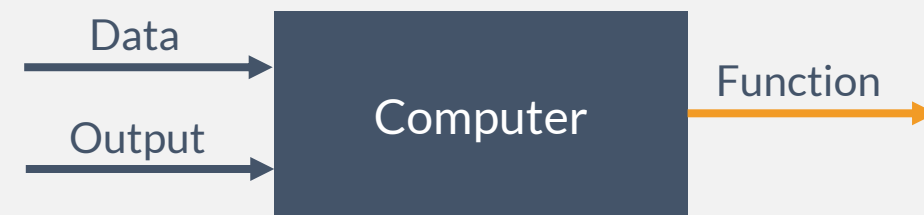
Benefits: Data-based strategies are gaining popularity for replicating complex systems.

Physical / analytical models
(white-box)



- + Traceability
- + Stability verification
- Deep domain knowledge necessary
- High effort / high model complexity

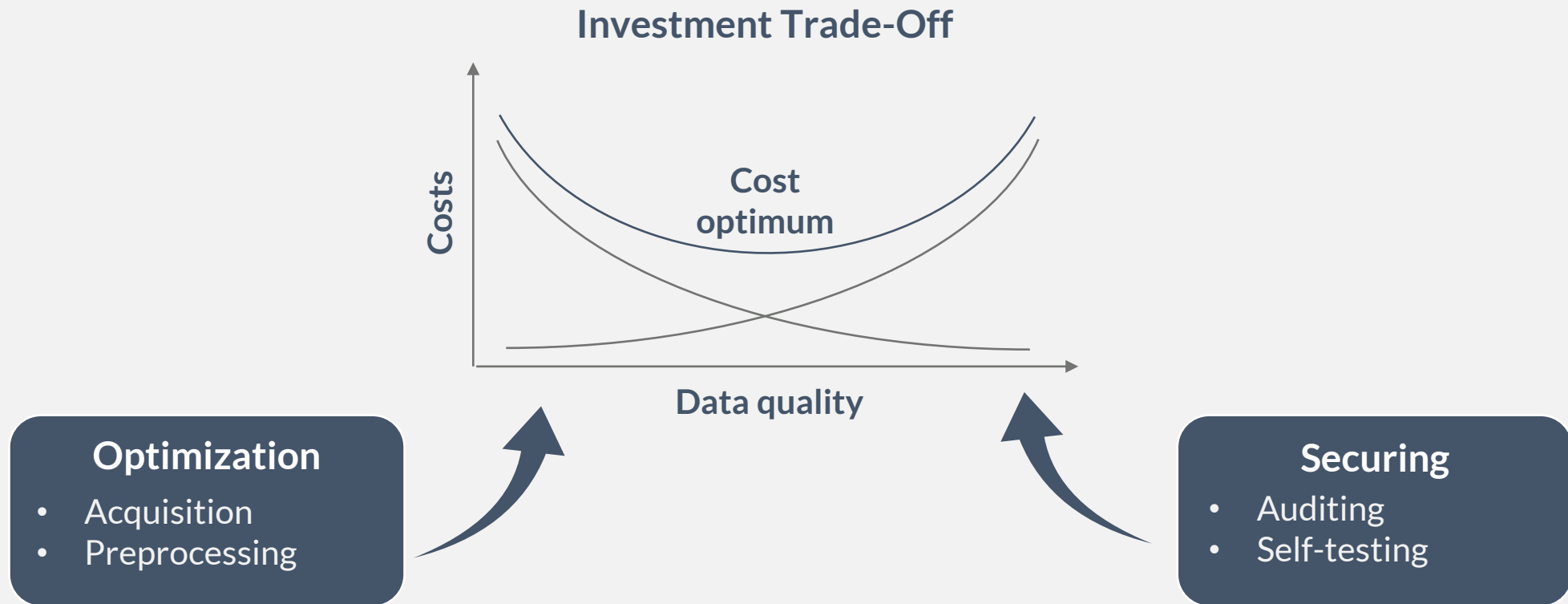
Data-based / Iteratively learned models
(grey/black-box)



- + Data availability increases through digitalisation
- + Self-learning algorithms
- Requires meaningful training data



Lessons learned: Data must be enriched!





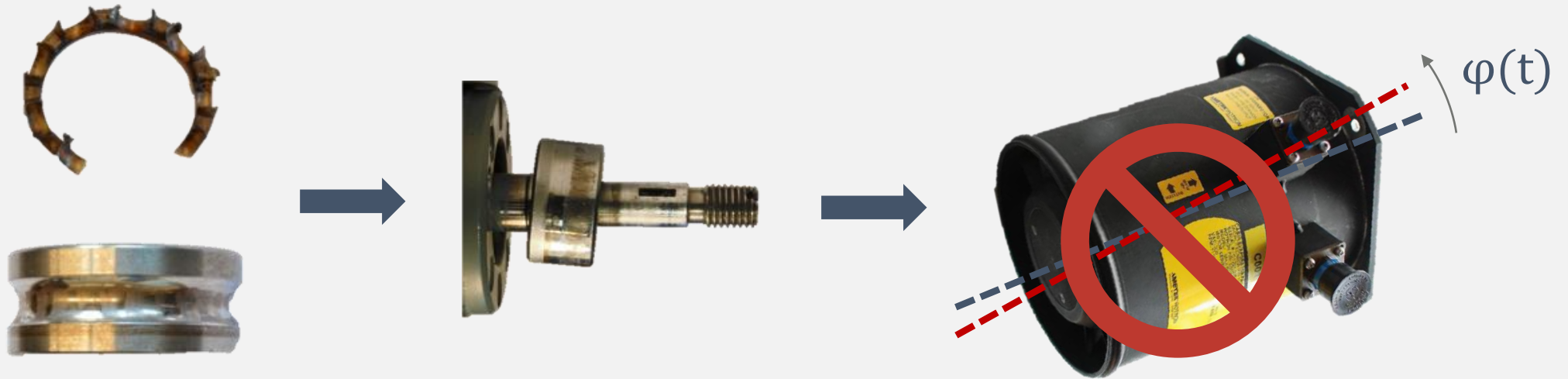
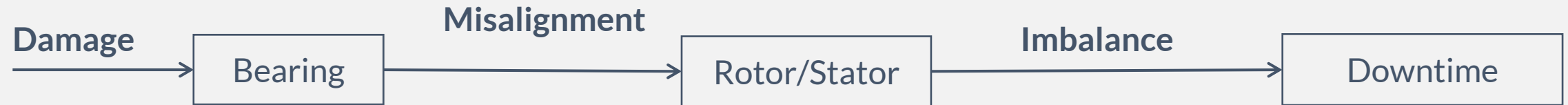
Lessons learned: Established methods & principles must be included!





GET AN IDEA

Common case: Bearings, coupling, gearbox are frequent error sources.

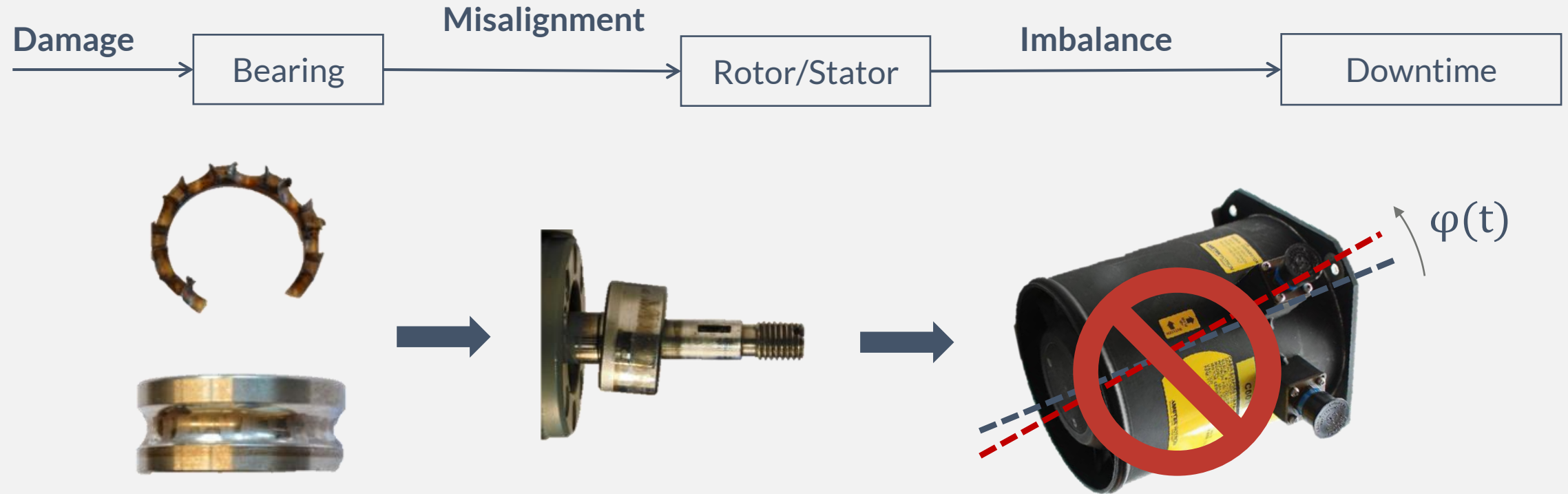


Conditions can only be determined by visual inspections.



Disassembly is time-consuming and requires field service.

Common case: Bearings, coupling, gearbox are frequent error sources.

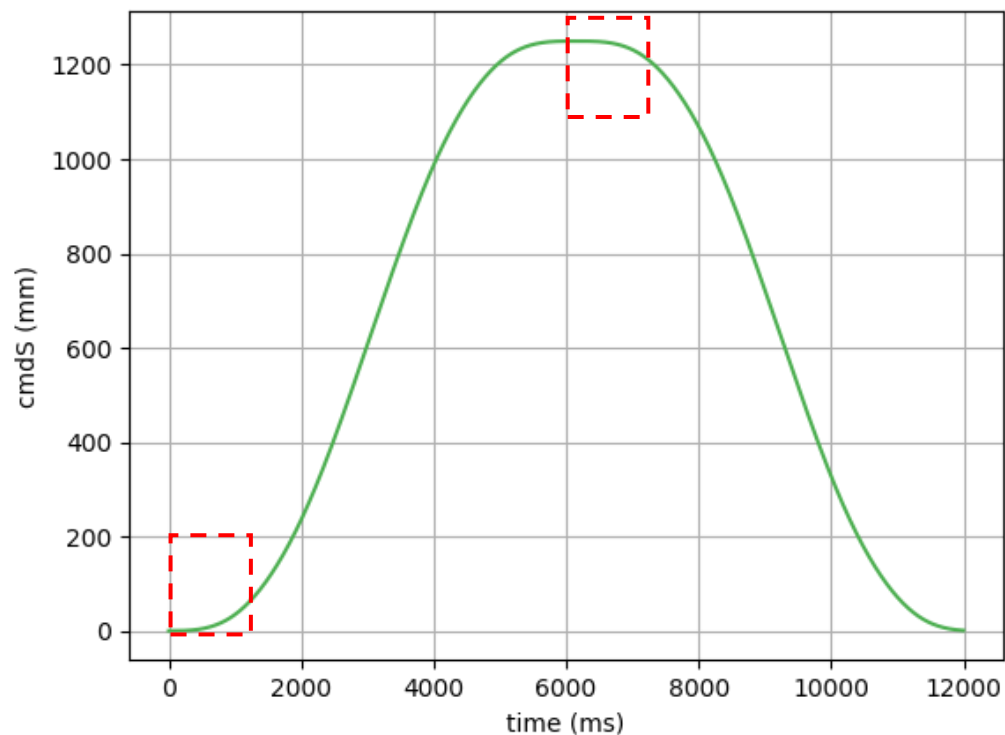


Possible strategies

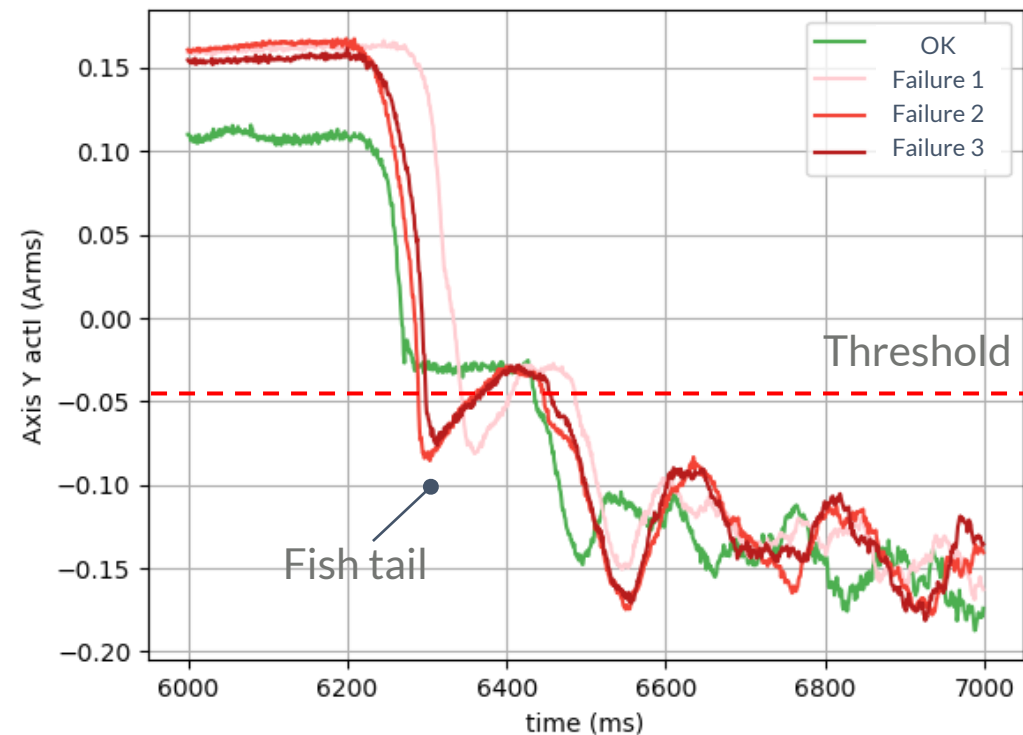
- Make components more intelligent using (more) sensor technology
- Intelligent use of existing information

Example: Failures in operation are not always easy to identify. Digitization pays off!

Start of a system movement
(commanded position)

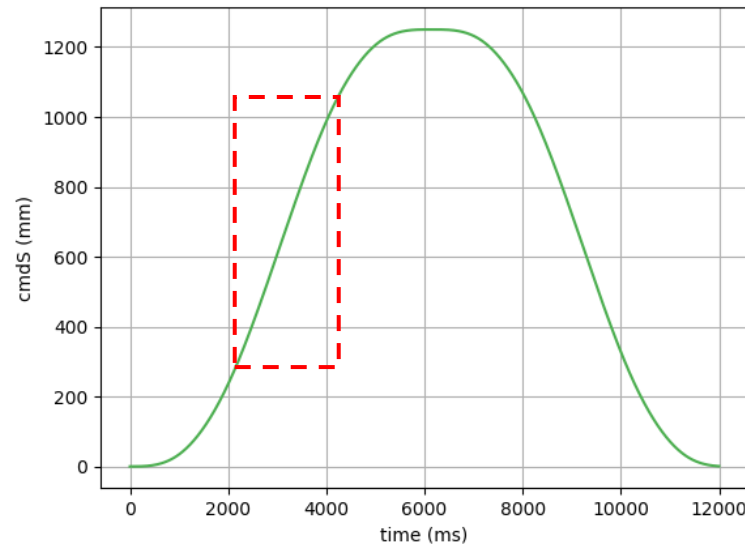


Measured signal of the movement (current)

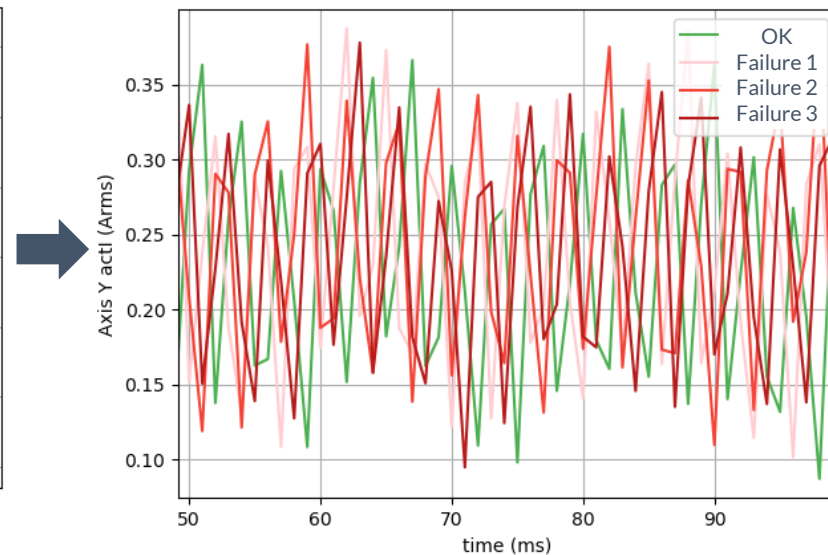


Example: AI-based systems can distinguish complex issues.

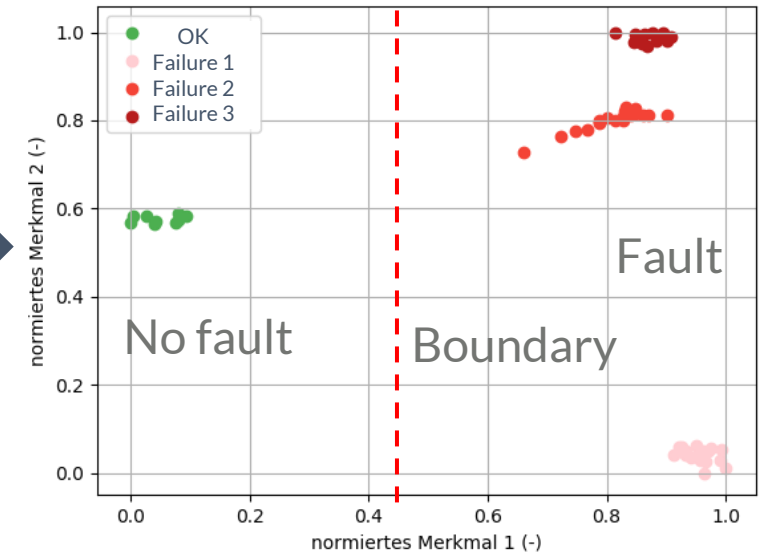
Unaccelerated system movement
(commanded position)



Measured signal of the movement

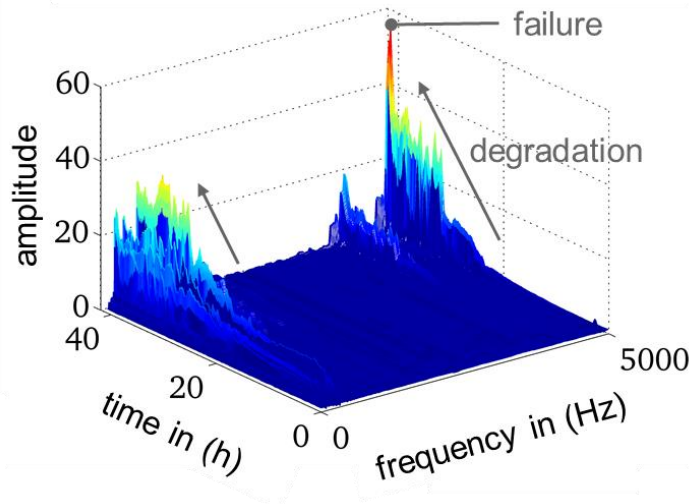


AI-based separation
by characteristic features



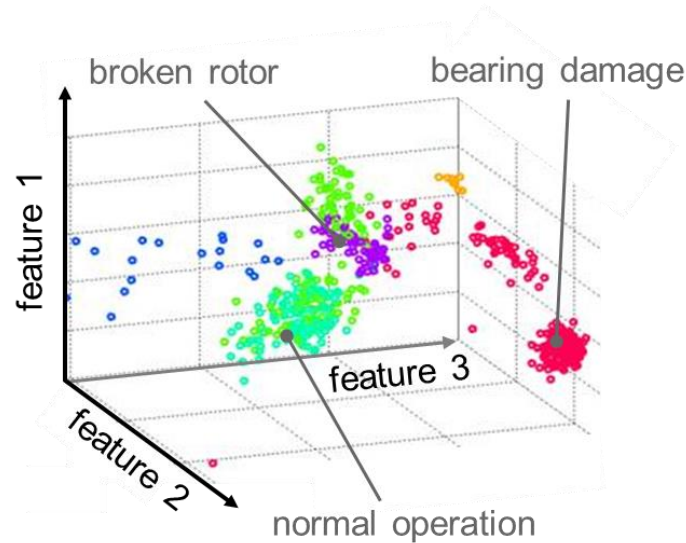
Approach: Predictions require three steps and are based on diagnoses.

Data acquisition and processing



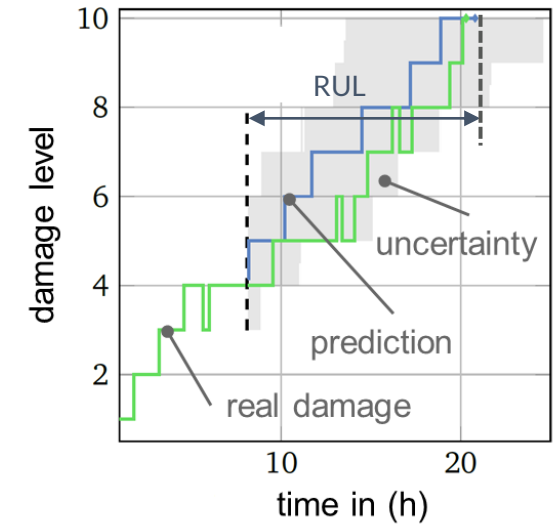
Description and identification of relevant features (measured, event based, modeled or simulated)

Diagnosis of the operating status



Description of current operating and system states

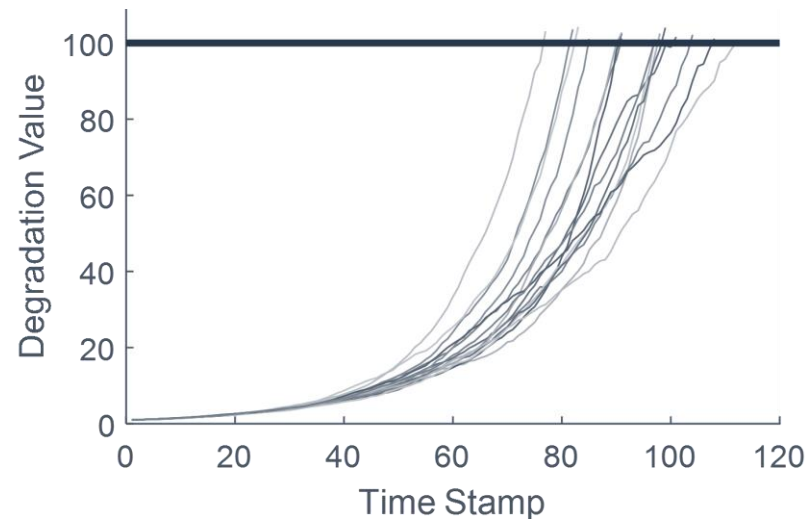
Forecast of remaining useful lifetime



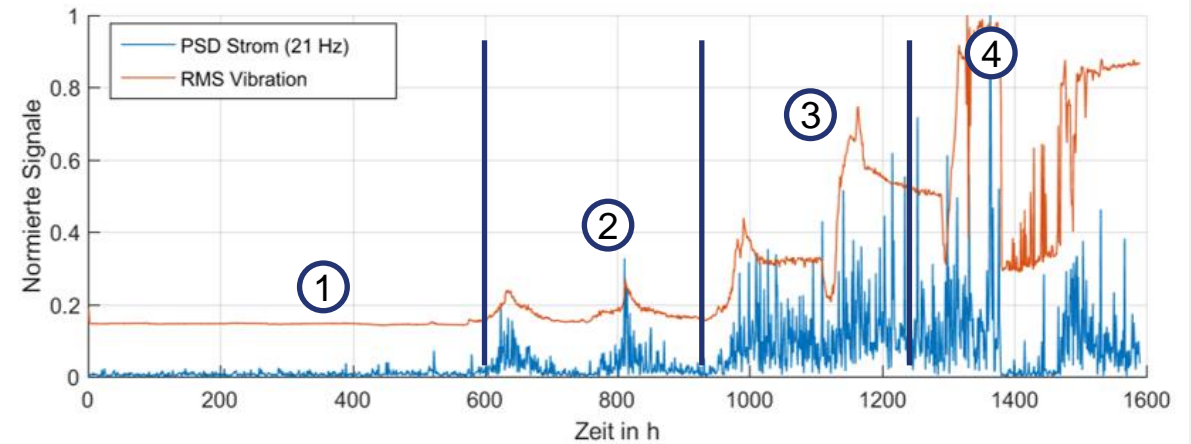
Determination of future states based on usage scenarios and tackling uncertainties

Model example: Data-based damage models are learned from the sensor data.

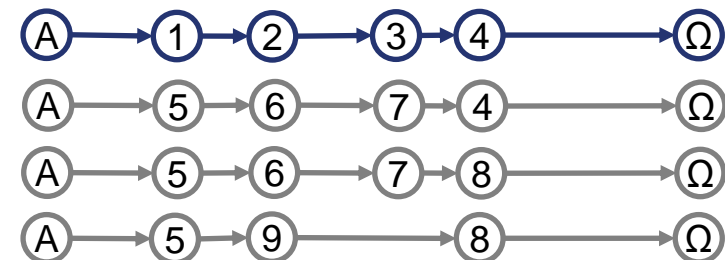
Qualitative damage progression



Real progression and aggregation to a state model

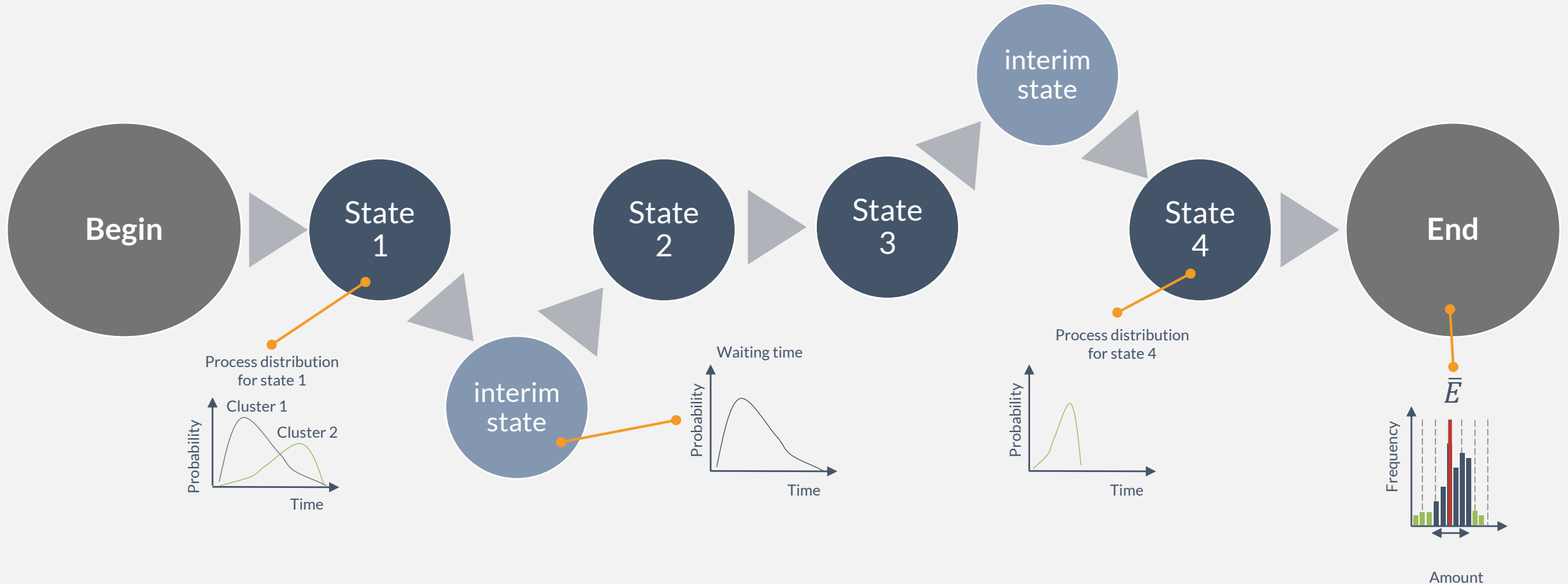


Deriving state models (e.g. Markov chains)





Usage for transactional forecasts: Identification of drivers for temporal occurrence and magnitude.



Insights in the use



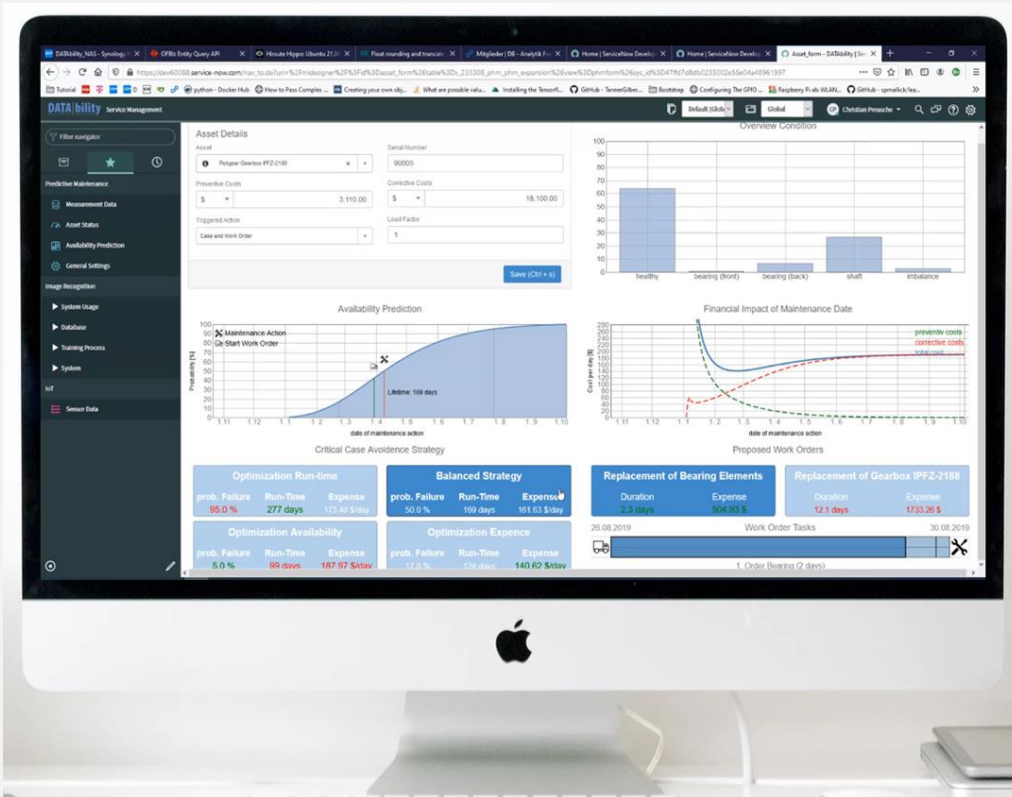


Big picture: We provide platform-independent smart analytic capabilities!





Enabling predictability: Comprehensible trends and future estimations!



Detailed system insights & information!



Increase availability by more than 25%!



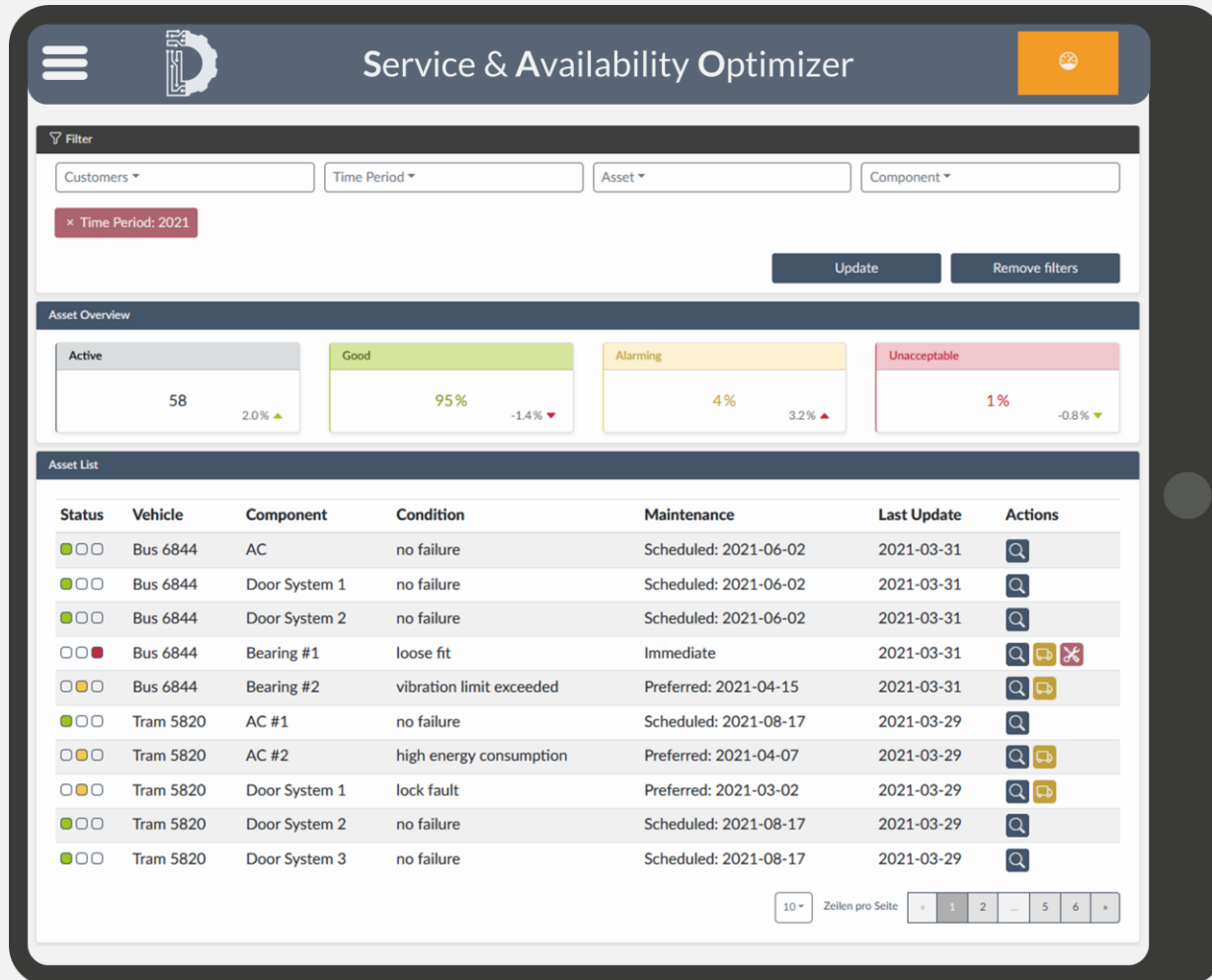
Avoid deficient service level agreements!



Watch it live by following [this link!](#)



Asset management: Fleet monitoring and decision support made simple!



Relevant key values at a glance!



Actionable insights & workflows!



Monitor & manage with a click!

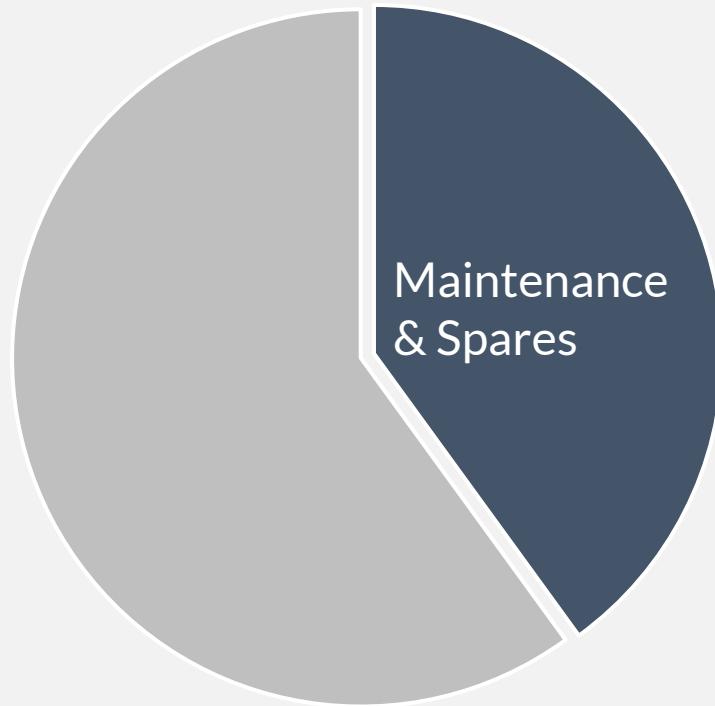


Watch it live by following [this link!](#)

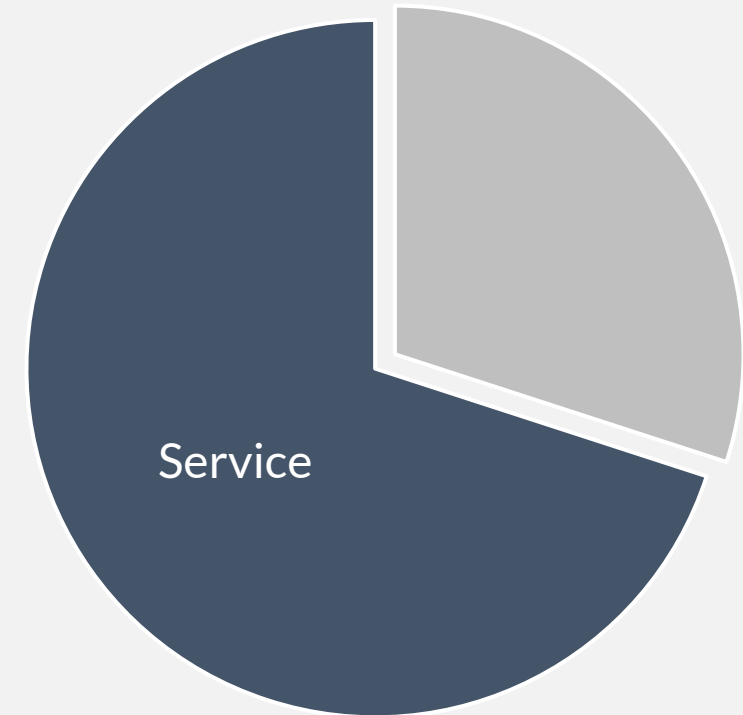


We got you: Benefit as operator or manufacturer to become future-proof!

Reduce operative efforts in maintenance



Increase profitability in production & after sales



■ Share
■ Others



We are looking forward to work with you!



Sebastian Baumann, M.Sc.
Managing Director & Founder

baumann@datability.ai



sebastian-oliver-baumann



Dr.-Ing. Christian Preusche
Technical Director & Founder

preusche@datability.ai



christian-preusche